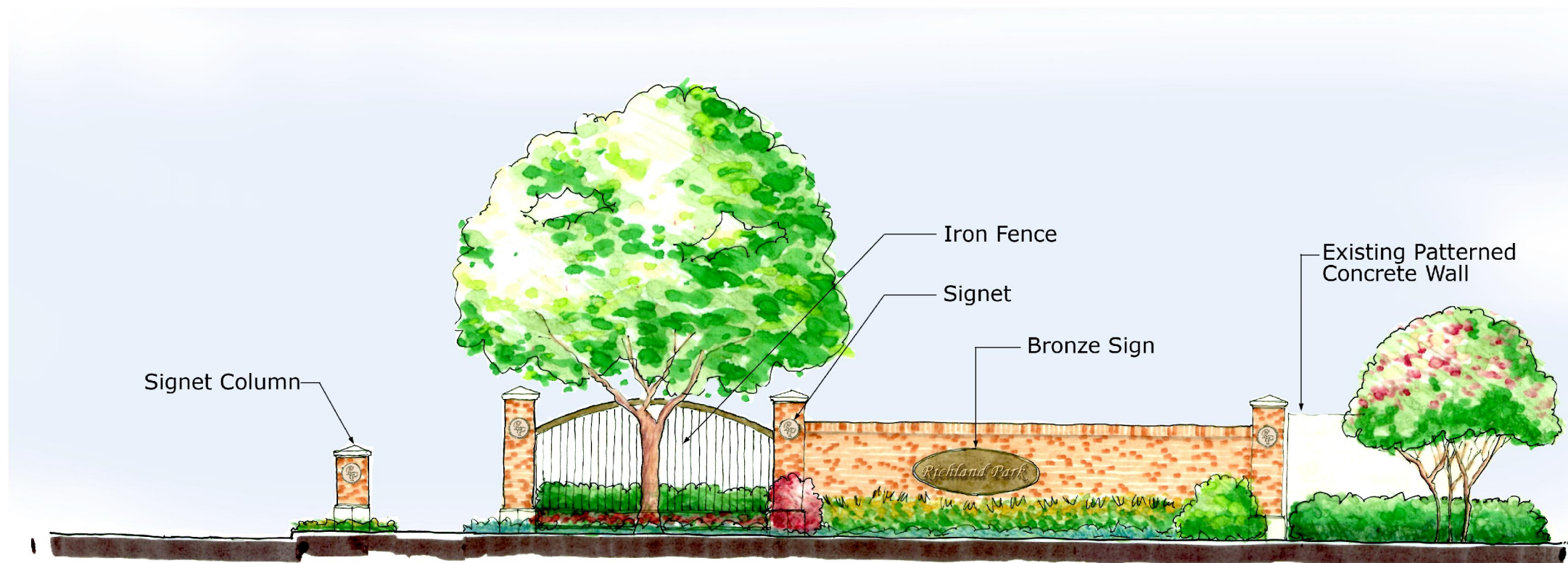


Audelia Road Entry Option A



Audelia Road Entry Option B

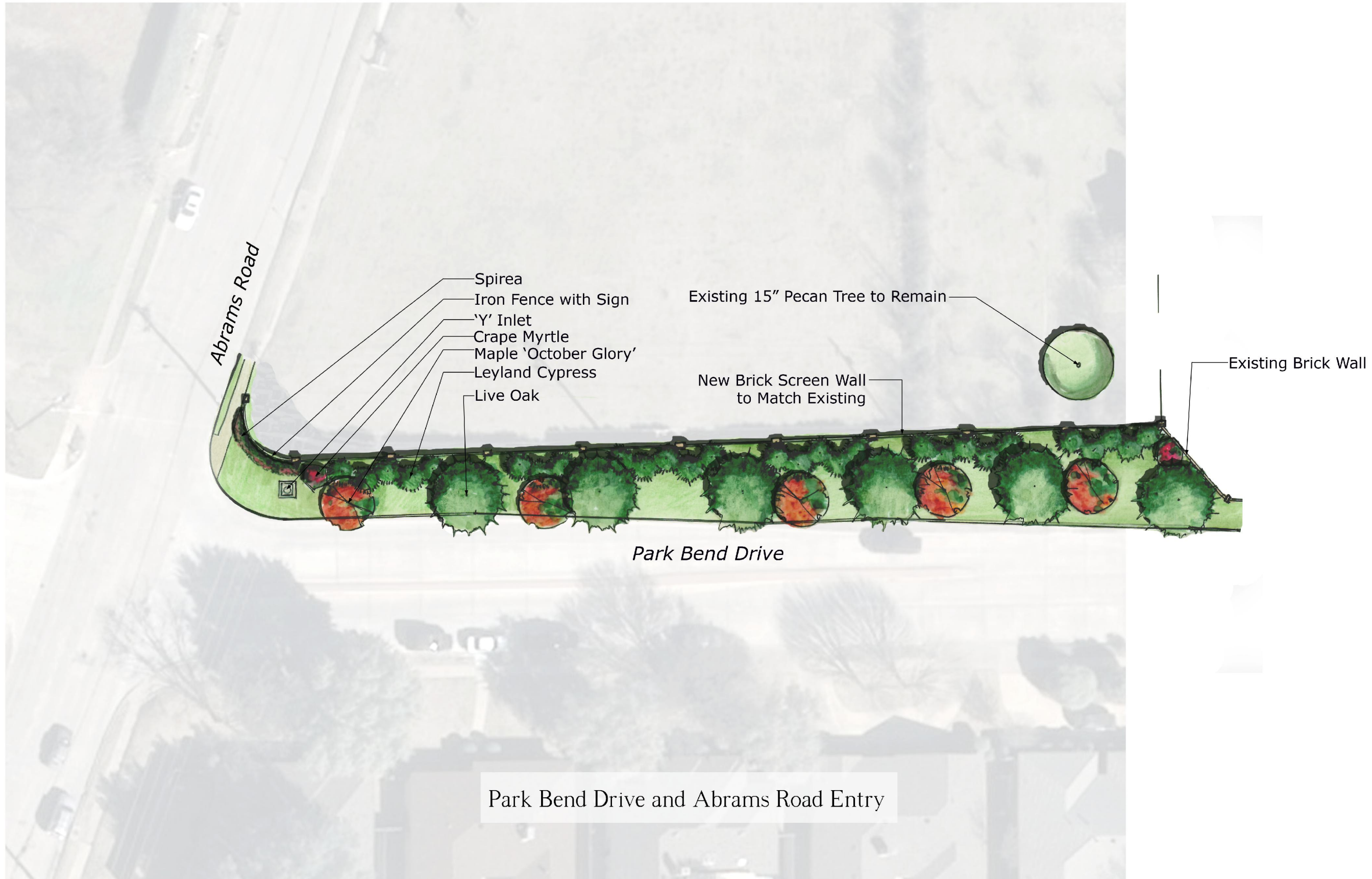
## Entry Concepts for the Richland Park Neighborhood



September 26, 2008 - 2008112

Richardson Neighborhood Vitality Program  
City of Richardson, Texas





Park Bend Drive and Abrams Road Entry

Entry Concepts for the Richland Park Neighborhood - Phase One



Signet Column

Entry Monument at Richland Park Drive



September 26, 2008 - 2008112

### Entry Concepts for the Richland Park Neighborhood

Richardson Neighborhood Vitality Program  
 City of Richardson, Texas





- New Plantings
- Signet Column
- Existing Crapemyrtle
- Existing Stamped Concrete and Asian Jasmine
- Relocated Crape Myrtle from Front of Bed
- Existing Lorapetalum to Remain
- Existing Crape Myrtle
- Existing Stamped Concrete
- Signet Column
- New Plantings

Richland Oaks Drive

Richland Oaks Drive at Walnut Street

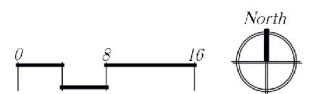
Walnut Street

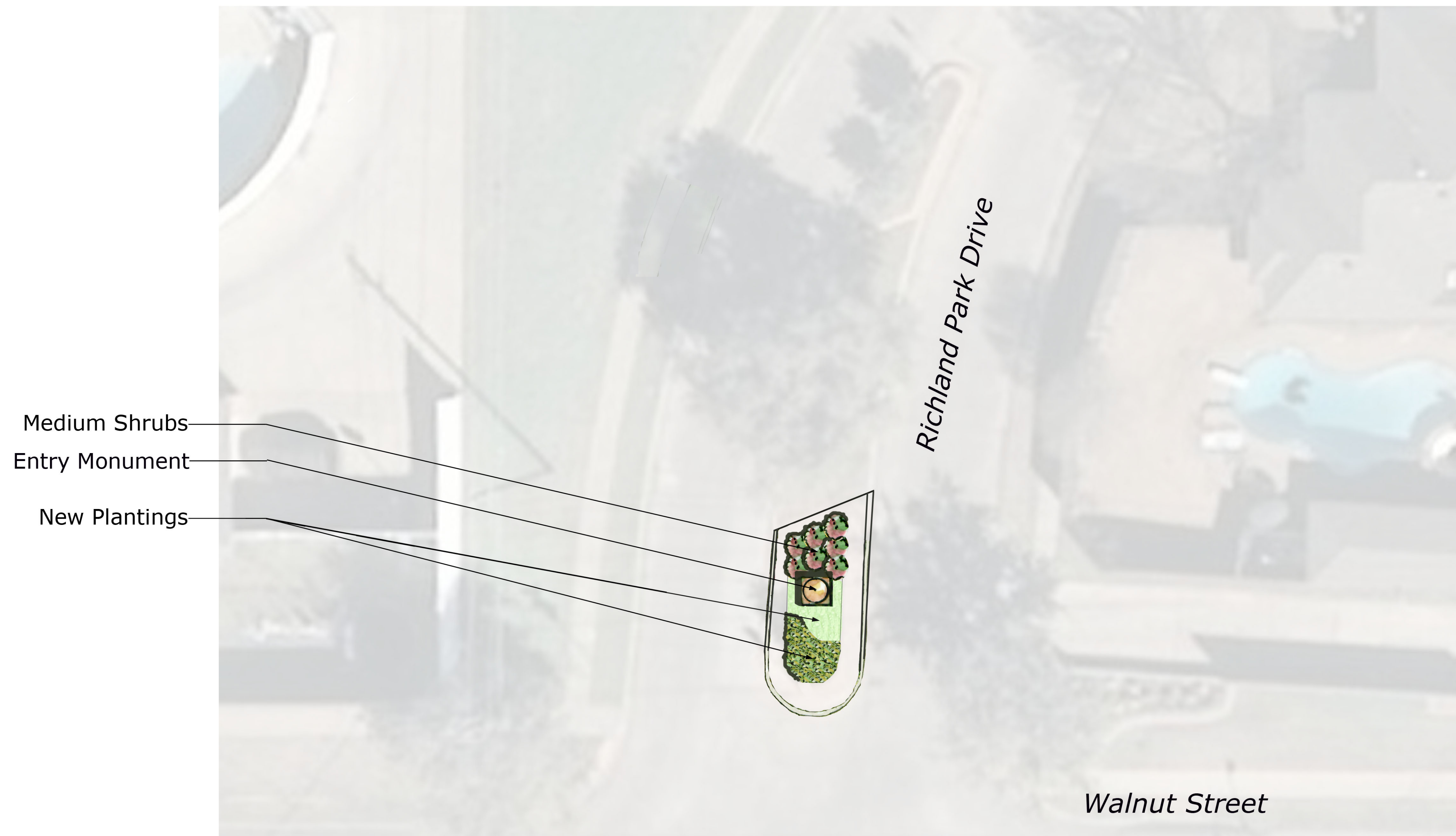
Entry Concepts for the Richland Park Neighborhood - Phase One

Richardson Neighborhood Vitality Program  
City of Richardson, Texas



September 26, 2008 - 2008112





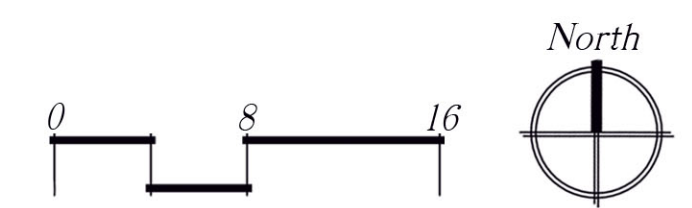
Richland Park Drive at Walnut Street

Entry Concepts for the Richland Park Neighborhood - Phase One

Richardson Neighborhood Vitality Program  
 City of Richardson, Texas



September 26, 2008 - 2008112





Iron Fence Sign Option A



Iron Fence Sign Option B

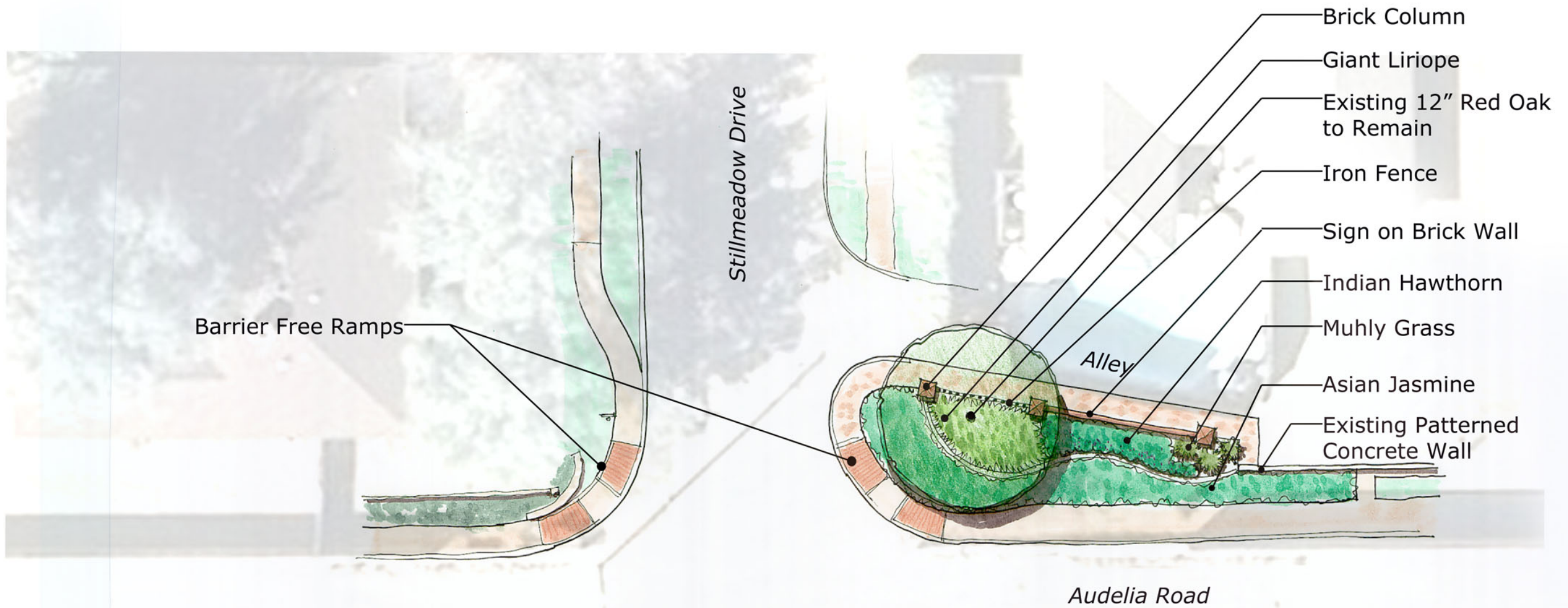
Entry Concepts for the Richland Park Neighborhood



September 2008 - 2008112

Richardson Neighborhood Vitality Program  
City of Richardson, Texas





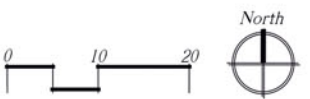
Stillmeadow Drive at Audelia Road Entry

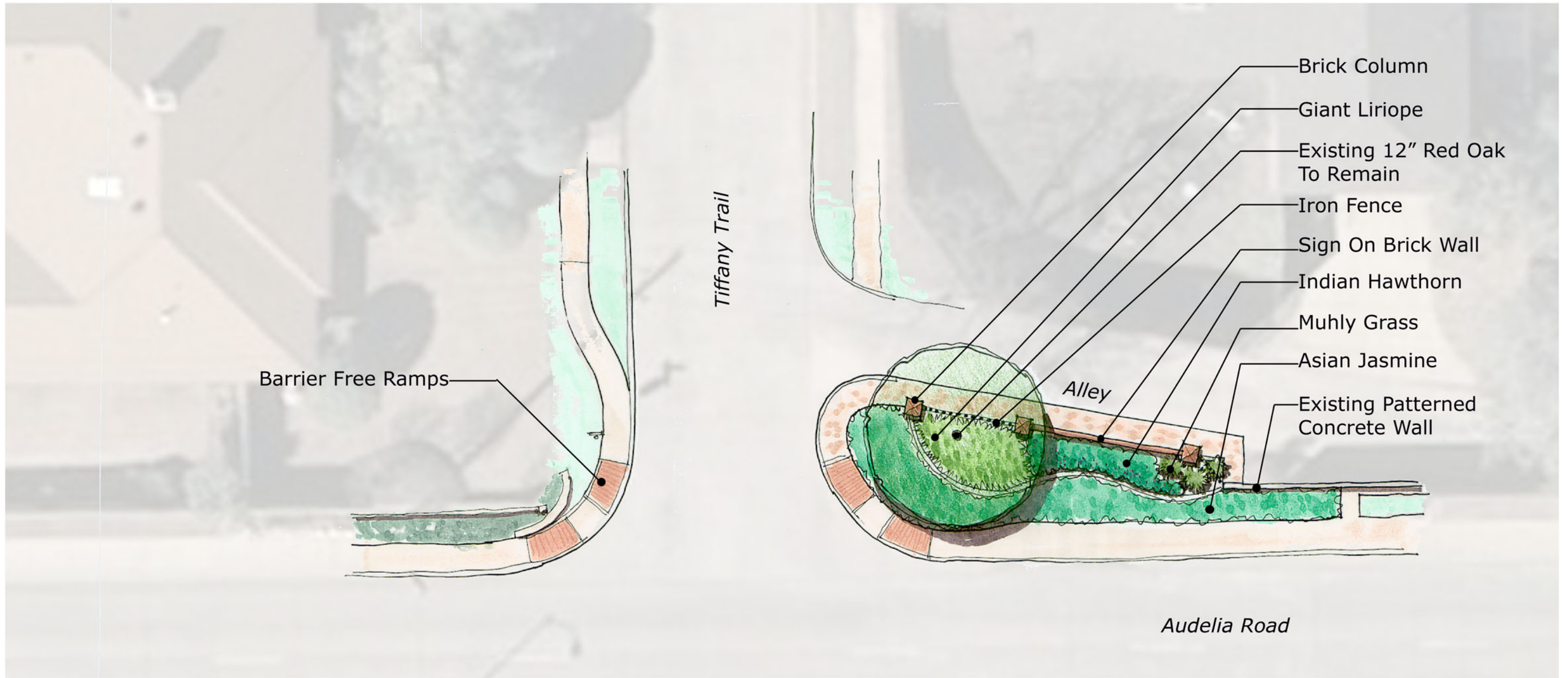
Entry Concepts for the Richland Park Neighborhood- Phase One



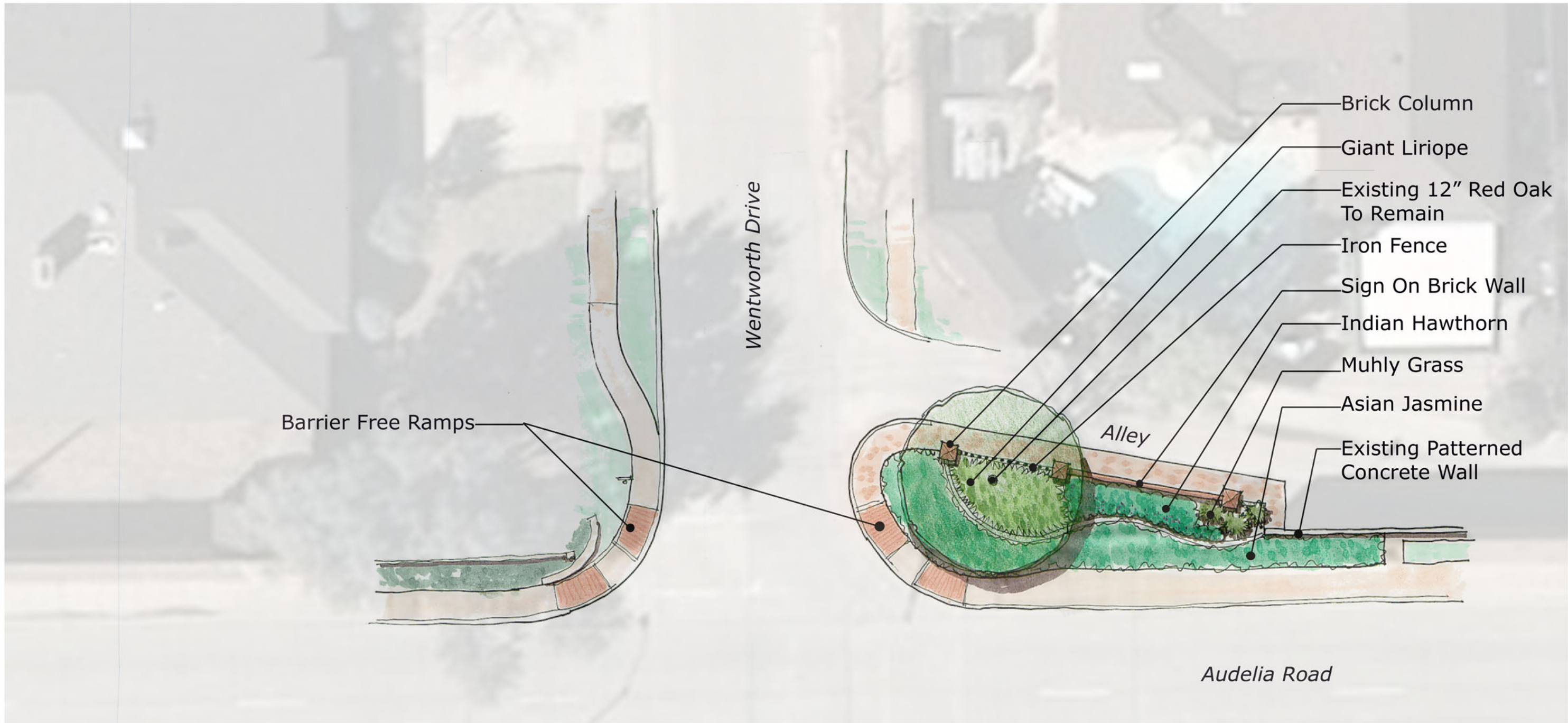
September 2008 - 2008112

Richardson Neighborhood Vitality Program  
City of Richardson, Texas





Tiffany Trail at Audelia Road Entry



- Barrier Free Ramps
- Wentworth Drive
- Alley
- Audelia Road
- Brick Column
- Giant Liriope
- Existing 12" Red Oak To Remain
- Iron Fence
- Sign On Brick Wall
- Indian Hawthorn
- Muhly Grass
- Asian Jasmine
- Existing Patterned Concrete Wall

Wentworth Drive at Audelia Road Entry