

# RICHLANDNEWS

Richland Homeowners Association Newsletter • P.O. Box 852636, Richardson, Texas 75085-2636 • [www.richlandhoa.com](http://www.richlandhoa.com)

**THURSDAY, NOVEMBER 9, 6:30 P.M.  
RICHLAND ELEMENTARY SCHOOL**

*Richland Homeowners Association (RHA)  
General Meeting and Election of Officers*



## General Meeting Agenda

6:30 – 7:00	Meet and Greet
7:00 – 7:15	Introduction of new Richland Elementary Principal and overview of what is happening at the school
7:15 – 7:45	City Council members – Overview of city plans for 2018 and short question/answer session
7:45 – 8:00	City integrity – Overview
8:00 – 8:10	Election of New RHA Officers
8:10 – 8:30	Questions/Answer any neighborhood concerns or programs you would like to see implemented into the neighborhood
8:30	Meeting adjourned
8:30 – 8:45	Visit with board members

## 2017 RICHLAND PARK/OAKS FALL EVENTS CALENDAR

### OCTOBER

- 3 National Night Out
- 21 Movie Night in the Park  
— *Wonder Woman*

### NOVEMBER

- 9 RHA General Meeting  
and Election of Officers

### DECEMBER

- 2 Richardson Christmas  
Parade

*The Richland Park/Oaks  
Homeowners Association  
wishes everyone a safe and  
joyous holiday season!*

## WHAT'S INSIDE

[Fall 2017 Issue]

President's Message .....	2
Crime Watch Report .....	3
Neighborhood News .....	4-11
• <i>National Night Out (October 3, 5:00 — 8:00 p.m.)</i> .....	4
• <i>Movie Night in the Park (October 21, 7:00 p.m.)</i> .....	5
RHA Curb Painting Notice .....	12
RHA Membership .....	13

## Please Support our Advertisers!

Most are Richland Park or  
Richland Oaks residents.  
Their support of the news-  
letter pays for printing and  
distribution. See pages 14-24.

## RHA OFFICERS/CHAIRS

### 2017 OFFICERS

#### President

D'Nelle Lyons  
President@richlandhoa.com

#### Vice President

Valerie Standifer  
VP@richlandhoa.com

#### Secretary

Carolyn Sherman  
Secretary@richlandhoa.com

#### Treasurer

Sharon Miller  
Treasurer@richlandhoa.com

### COMMITTEE CHAIRS

#### Architecture/Beautification

Open (Chair)  
Beautification@richlandhoa.com

Linda Brollier (Co-chair)  
Millie Harrison (Co-chair)

#### Activities/Socials

David Kirkland (Chair)  
Activities@richlandhoa.com

#### Block Captains

Open (Chair)  
Captains@richlandhoa.com

#### Membership

Phil Cullens (Chair)  
Membership@richlandhoa.com

#### Newsletter

Karla Weesner (Chair)  
News@richlandhoa.com

#### Crime Watch Coordinator

Bob McClure  
Crimewatchone@yahoo.com

#### Database Coordinator

Khalid Hussein  
Database@richlandhoa.com

#### Website Coordinator

Barry Propes  
Webmaster@richlandhoa.com

#### Advisory Members

Dave Harrison  
Curtis Dorian

#### Newsletter Content/Design

Karla and Jay Weesner



## PRESIDENT'S MESSAGE

Richland Homeowners Association  
Richland Park and Richland Oaks Community

### DEAR RICHLAND HOMEOWNERS ASSOCIATION MEMBERS:

Fall is right around the corner and is always hard to believe when the temperature is still in the 90s. With fall comes school, be mindful of the speed limits in school zones and throughout the neighborhood. I hear people complaining about people outside our neighborhood speeding but I have seen people who live in the neighborhood speeding down our streets. Please be mindful of your speed, we want to keep our children, pets and neighbors safe.

This is also the time of year we look and make lists at what we are grateful for. I have such a sense of gratitude living in this neighborhood. Our tree lined streets and well-kept homes makes it a great place to live. I know it is not perfect, we have some issues with some of our streets and homes. However I feel the neighborhood is like a mosaic picture. We have 1000 pieces (967 homes, park, school, streets and alleys) all different from each other but together make a beautiful picture. We have a few tiles missing due to the few unkempt homes and streets, but if we only concentrate on the missing pieces we miss the beauty of the whole picture. We should always be working to repair the broken or missing pieces but not to let them overshadow what we have. It is also a very diverse neighborhood. The diversity makes us stronger and, if we let it, makes us more knowledgeable and understanding of other cultures and ideas.

Coming up are two of our big yearly events, **Crime Watch National Night Out** and our **Fall Movie Night in the Park**. David Kirkland, Activities Chair and Bob McClure, Crime Watch Coordinator have been busy planning these two events. All are welcome. Information about these events are listed in the newsletter (Pages 4 and 5). Both are great ways to meet and visit with your neighbors.

Our General meeting is on Thursday, November 9, at 6:30 p.m. at Richland Elementary. Come and meet the new principal of Richland Elementary along with members of the city council. A representative of city integrity will also be at the meeting to clarify what the city can do to help us with problem homes in our neighborhood. The new RHA board will be elected and introduced. There will also be some discussion on changing the name of the homeowners association to a neighborhood association. There are some misconceptions of our RHA. We are not a mandatory HOA and cannot tell neighbors what they can or cannot do with their properties. We are an association to keep our neighborhood safer by supporting crime watch, having social events and enhancing our neighborhood through landscaping and beautification.

If you would like to serve on the board as a chairperson or co-chairperson please contact Val Standifer (vstandifer@gmail.com) or Bob McClure (crimewatch@yahoo.com). We need more people to step up to help make this association even stronger. If you don't want to be a chairperson we are also looking for co-chairs to help make the load lighter for everyone.

*Hope to see you at our general meeting on November 9 at 6:30 p.m.*

D'Nelle Lyons  
Richland Park/Oaks President  
[President@richlandhoa.com](mailto:President@richlandhoa.com)



## CRIME WATCH REPORT

Richland Homeowners Association  
Richland Park and Richland Oaks Community

### HELLO NEIGHBORS!

Hope all is well with you and yours. Once again there have been NO HOME BURGLARIES. A lot of it has to do with our fantastic Crime Watch Patrol, and the other is the amount of cameras installed in the neighborhood. According to the police it's the same all over the city.

There are a lot of good wireless systems out there that you can install yourself. I put one in a few months ago and just love it. Anything appears on camera I can talk to them from my phone from work or out at dinner.

**National Night Out** is on Tuesday October 3, 2017 in the park at Lois and Park Bend. Please bring a few can goods for Network Ministries. *Please no out of date cans.* You can't believe how many I throw away.

We will have a band to entertain us. I also have T.J.'S DAWG HOUSE food truck for dinner. Prices are great and if you have never had a dog from his truck parked at Lowe's Home Improvement you're really missing something. So come out and bring a neighbor and take a bite out of crime (and a hot dog)!

*Stay safe out there!*

Bob McClure, Crime Watch Coordinator  
214.763.0589 • [crimewatchone@yahoo.com](mailto:crimewatchone@yahoo.com)

### HOME SECURITY ALERT SCAM SO PLEASE BE AWARE!

- Many out-of-town sales teams in our neighborhood will attempt to scam you into signing a contract with them
  - Most of these companies have no local office and leave
  - Some will attempt to get you to take a loan, to finance new security equipment
  - You could end up paying two companies for security if they obtain your signature
  - Often use high pressure to force you to make a decision and sign a contract
- These are tactics and false statements used to gain access to your home, finances, monitoring agreement, or signature so they can bill you.***

### Richland Park and Richland Meadow's Personal Officer

**Ed Coleman** [214.282.0843]

**For Emergencies, continue to call 911.**



## CRIME WATCH VOLUNTEERS NEEDED

The Richland Park/Oaks Crime Watch needs more volunteers to help patrol our neighborhood. We have fairly good coverage during the daytime, but are in need of help for nighttime. Unfortunately, late night is when we experience most of our problems. Therefore, we need more volunteers at night, every day of the week. This is a great way to get out, meet new people, learn new things and experience something different in life.

In order to join the Crime Watch Patrol, you will need to fill out an **application form** which we submit to the Richardson Police Department. The police will run a criminal background check on each applicant. Once all the paperwork has been cleared, the applicant will receive about six hours of training. All new applicants will also be assigned a patrol partner.

Crime Watch Patrols are extremely effective because criminals do not want to get caught by anyone, police or otherwise. So when you put those reflective signs on your cars and patrol the neighborhood, the bad guys tend to go some place else. The problem is we need to maintain these patrols at all hours in order to keep crime away.

Each shift usually consists of one and half hours of patrol time every other week (total of 3 hours per month.) The two shifts where we need the most help are evenings (7 p.m. to midnight) and deep nights (midnight to 6:00 a.m.).





POLICE • COMMUNITY PARTNERSHIPS

**TUESDAY, OCTOBER 3, 2017**  
**5:00 – 8:00 PM**

*This year not only get out and meet your neighbor, but get out and help your neighbor by putting a lid on hunger!*

Every citizen who attends the *National Night Out* block party is encouraged to bring one **non-expired** canned good or non-perishable item. Richardson police officers will pick up the donations from every party and all items will be donated to the Network of Community Ministries Food Bank. T.J.'s Dawg House will be set up selling food for dinner.



## Wonder Woman



**MOVIE NIGHT IN THE PARK**  
**OCTOBER 21, 2017**  
**7:00 PM**

Don't miss RHA's *Movie Night in the Park*! Join your neighbors on Saturday night, October 21st at 7:00 p.m. in Richland Park by Richland Park Elementary. The movie this year will be *Wonder Woman*. Bring chairs or a blanket to sit on and consider getting there about 30 minutes early. The movie will end around 9:30 PM. Bring any snacks or meals you want, but we will also have popcorn and a snow cone machine (\$3.00-\$5.00). So come on out, meet your neighbors and enjoy a great movie! It's just another fun way for your Richland Homeowners Association to serve you and bring your neighborhood together!



# A good time to live in Richardson

## METHODIST RICHARDSON MEDICAL CENTER

Due to the rapid population growth in the area, the Methodist Richardson Health Center (MRMC) Board recently approved an \$85 Million project at the main campus (Bush/Renner location) that includes the addition of two floors to the main building, a new operating room, two new post-anesthesia care areas, seven new pre-op rooms and a seven-story parking garage.

The MRMC was recently recognized as a Magnet hospital by the American Nurses Credentialing Center for excellence in nursing, one of only 400 hospitals in the nation to receive this designation.



## CITY-LINE PROJECT

The city of Richardson earned the *Celebrating Leadership in Development Excellence (CLIDE)* Award for the North Central Texas Council of Governments for its innovative planning and strong implementation support for the CityLine transit-oriented development.

## RICHARDSON FIRE DEPARTMENT

The American Heart Association (AHA) has awarded the Richardson Fire Department its *Mission: Lifeline EMS Gold Award*. The award requires first responders to get severe heart attack victims into catheterization surgery in less than 90 minutes at least 75 percent of the time. Richardson emergency medical personnel far exceeded that standard by working with Methodist Richardson Medical Center and area hospitals and making treatment possible in as little as 43 minutes.

## MISS TEXAS

Miss Texas was once again crowned at the Eisemann Center. The new Miss Texas is Margana Wood from Houston. This is the fourth year the pageant has been held at the Eisemann Center

## OUR MAYOR

Richardson Mayor Paul Voelker was elected to the North Central Texas Council of Government Executive Board on June 16, 2017.



## RICHARDSON CHRISTMAS PARADE

The Richland HOA would like to once again participate in the Richardson Christmas parade on Saturday, December 2. We would like to have a great showing of adults and children in the parade. Call 972-238-8560 if you would like to participate. There are Santa hats for adults and elf hats and collars for the kiddos. We would ask that you wear either a black, red or green t-shirt to have a more uniform look to our participants.

The parade benefits the North Texas Food Bank and distributes food and personal items to people in need in the Richardson and north Dallas area. The parade is a fun way to bring in the holidays. Please RSVP to make sure we have enough hats for all. Hope to see you there.

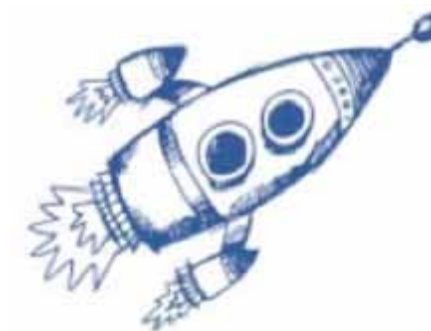


## RHA SUPPORTING RICHLAND ELEMENTARY



The Richland HOA board voted to donate \$1,500 in supplies for teachers at Richland Elementary. As a former teacher myself, I know personally, how much teachers reach into their own pockets each school year to buy supplies for their classroom and their students. The RHA wants to support our neighborhood school and its' teachers and by buying needed supplies it shows we care about them and what they are doing for their students. The school is a wonderful resource in our neighborhood. Go down and take a look, the school is incredible and our neighborhood is lucky to have it to help educate our children.

—D'Nelle Lyons



A BIG THANK YOU goes out to all who helped distribute the flags for the 4th of July weekend despite the early morning rain. It is such a joy to see the flags flying knowing it is a joint effort between the RHA and the neighborhood. After flags are distributed everyone comes back to enjoy breakfast and a chance to get to know their neighbors. Thank you to all who help with this project (I apologize if I missed someone).

—D'Nelle Lyons

- Lorrie Anderson
- Val Beasley
- Robert & Judy Bloome
- Lynn & Shirley Bond
- Pam Crum
- Phil & Lily Cullens
- Mike Fairchild
- Dave & Millie Harrison
- Charlie & Kathy Johnston
- Becky Jones
- John & Sandy Jones
- RJ & Margaux Loera
- Gary & D'Nelle Lyons
- Cassie McCampbell
- Derrick & Keysha McCloud
- Connie McClung
- George & Dorthy McKearin
- Janna McElya
- John & Beverly Moser
- Janice Peters
- John & Lana Rice
- Bill & Ida Rusk
- Steve & Diane Shrull
- Bob Sherman
- Gerald & Alanna Singleton
- Val Standifer
- Chandra Thapa
- Jay & Karla Weesner





## LAWN MAINTENANCE AND WATER CONSERVATION IN RICHLAND PARK

—John Rice

**D**id you know that one of your best assets is your home and its value? Regular lawn maintenance is key to keeping your home value and that of the neighborhood at a level expected based on what homes are selling for that are well maintained. Regular mowing and edging promotes lush, healthy growth of your yard turf. It keeps the drive up appeal of your house attractive. It also helps the same drive up appeal of your immediate neighbors. If a neighbor is attempting to sell their house, and it has a manicured lawn, and yours is unsightly and unattended it hurts their attempt to get the maximum dollar for their home, based on the perception of potential buyers.



Allowing your yard to go weeks on end without mowing and edging creates a haven for mice and rodents, and other unwanted critters. It also allows the growth of crabgrass, one of the most common weeds in our



lawns, mainly occurring from neglect. There are pre-emergent weed compounds you can buy commercially that will prevent crabgrass. If you prefer not to use chemicals, Howard Garrett, the Dirt Doctor has lots of references to killing crabgrass on his website. <https://www.dirtdoctor.com/> If you do not want to do yard work, or can't, there are yard crews driving up and down our streets all day who will gladly work out a mowing program with you. Talk with a neighbor. Chances are one of them is using a lawn service.

Start out in the early fall and into spring chopping leaves with your mower, instead of sending them to a landfill, or letting them simply sit on your lawn. Your lawn will thank you well into the late spring and summer. Those dead leaves are free fertilizer. They are packed with beneficial nutrients and bacteria, creating a thick lush lawn. Neil Sperry's website has many good references to mulching leaves and grass into your lawn. <http://neilsperry.com/faq/i-still-catch-all-my-clippings->

[i-like-the-way-the-lawn-looks-when-i-do-can-i-work-them-into-the-garden-10406/](https://www.dirtdoctor.com/)

In addition to lawn maintenance, water conservation is key to our community's well being. If you are watering during a rain, or shortly afterwards, because your sprinkler system is set to automatic watering, you are wasting a valuable commodity. Get a rain sensor for your system, or just go out and stick your finger down in the turf. You may be surprised to feel moisture deep down in the turf. Be conscientious about your water usage. You do not need to water for 30 minutes per station. Fifteen minutes per station a couple times a week should keep your lawn in good condition. <https://www.watermyyard.org/#/Location>. This link will take you to a website explaining how much you really need to water. This has been an unusual year for rain. You may be surprised to find you don't need to water at all.

Be a good steward of the ecosystem in our neighborhood and the water supply as well.

## CREPE MYRTLE PRUNING TIPS



**A** Crepe Myrtle is not quite like any other local plant in how it grows, and is therefore not like others when considering how they can be pruned. A Crepe Myrtle is an ornamental plant that blooms profusely throughout most of the growing season. If a Crepe Myrtle is not tip pruned by spring, the new growth will emerge approximately 7-12 inches from the old seed pods. This leaves dead tips as it emerges in the spring. Since Crepe Myrtles are rapid growers, the new growth will rapidly obscure the view of the dead tips within a few months. The dead tips are of no great consequence to the overall health of the plant. Aesthetically, the dead tip is not attractive for the first few months of the growing season. They are also known for producing root sprouts that grow upward from the outward growing roots or near the root collar (or root crown).

The three factors that must be considered in the pruning of Crepe Myrtles are health, aesthetics and cost or time to maintain the desired condition.

Crepe Myrtles are hardy plants that can sustain moderate freeze damage or severe reductions in size

(even to the ground level) and in most cases, still grow back. Crepes that are planted north of our area can encounter freeze damage to the top growth, but are like an annual in that they can grow back from their roots. From a pure health prospective, they should be maintained in the same fashion as a shade tree by removing crossing limbs and canes (if practical), removing root sprouts, structural pruning, and basic deadwood removal. This type of pruning can be done anytime of the year and is the most beneficial to the long term health and longevity of the plant

From an aesthetic point of view, tip pruning of Crepes can be utilized to make them more attractive. Proper tip pruning should be accomplished in late January thru March, but not after the new shoots have emerged in the spring. Current research shows that tip pruning (or heavy pruning) at other times of the year, may increase the odds of freeze damage. Tip pruning should be to approximate pencil size twigs and in a rounded form. Some Crepes may end up columnar in shape, but in any event, the top growth should not be cut flat because it encourages

all the blooms to be at one height. Severe cutting back is not attractive, reduces food storage, encourages poor branching structure and should be avoided. Since all Crepe Myrtles will have dead tips in the spring, removal of pencil size twigs avoids viewing the dead portion and is more aesthetically pleasing. The best show of flowers can be obtained by constantly removing the spent seed pods (dead heading) throughout the growing season, although it can be very time consuming.

The amount of time (or cost) required to achieve a positive effect is much less for small (or medium) size Crepe Myrtles. Large or tall Crepes can be structurally pruned as noted above, however, tip pruning can be very time consuming (or costly) and is not of much benefit to the overall health. Severely cutting back the trunks will reduce the amount of time (or cost) to maintain them, but it is not what is best for the plants structure or health.

In summary, if you are concerned about only health, prune it like a small shade tree. If you are concerned with the aesthetics, prune it like a small shade tree and also tip prune. If you really want show, prune the seed pods as they die. Each step beyond leaving them alone involves more time and cost. What is right for you depends on your personal preference, the characteristics of the plant, the site and of course, the budget.

—Steve Houser

<http://www.arborillogical.com/knowledge-articles-and-publications/crepe-myrtle-pruning/>



# COMMON STREET SCAMS AND SCHEMES



## HOME REPAIR

These suspects solicit yard work, roof repair, chimney sweeping, driveway paving, etc. They may claim to have leftover materials from another job. Or, they may claim to be there for warranty work, or that a rodent was seen going into your attic. After applying superficial and very shoddy “repairs,” the scammers demand a much higher payment than initially stated.

## DISTRACTION/UTILITY INSPECTOR

These suspects can include women with children. You are engaged in conversation with one while other unseen suspects sneak into your home through another door, stealing cash and property.

OR

Someone claiming to be with a utility company or municipality comes to your door. He or she

needs to come inside or check a problem in the backyard. The “inspector” will distract your attention while an accomplice slips in and steals cash and valuables.

## CANADIAN SWEEPSTAKES

You receive a call from someone congratulating you on winning a Canadian sweepstakes or lottery, but you must pay taxes, processing, or international transfer fees up front in order to claim your “millions.” You are instructed to wire the payment to them.

## FAKE CHECK SCAM

“Just deduct my taxes from my winnings,” you say? Scammers are now including “certified checks” with winning lottery announcements. You are instructed to deposit the check, which is intentionally written

for more than twice the amount of your taxes and fees. But, you must withdraw from your funds and wire the “difference” back to them while their check is stuck on a ten-day hold. The bank notifies you later that their check is counterfeit. You lose your withdrawal.

## DUTCH LOTTERY/EL GORDO SPANISH LOTTERY

By postal mail, e-mail or fax, these letters congratulate you on winning their lottery. After much legalese and rambling about lottery protocol, you are advised to keep confidential your good fortune. A form is included for you to submit your confidential bank information. Not only have you compromised your personal financial information, but there will be future requests for transfer and processing fees.

## LATIN LOTTO SCAM

Perpetrated by/against Hispanics, a suspect will approach you in a parking lot speaking your native tongue. The suspect claims to have a winning lottery ticket, but is afraid to cash it because of his/her illegal immigrant status. Suspect #2 will join the scam. The suspect will show a printout of a recent winning ticket, with the date altered or covered. You are required to put up money as ‘security’ after they offer to split the winnings with you. They disappear with your money.

## LOST PET OR LOST PROPERTY

You place an ad in a local newspaper about a lost pet or lost property. You then receive a call from a long haul truck driver who

found your missing item or pet, but he is now hundreds of miles away. He will return your item or lost pet after you send him shipping fees and a reward by wire transfer. The truck driver never had your lost pet or property. He merely played off your emotions from your newspaper ad.

## PHISHING

A caller or e-mail purports to be from a financial or credit entity, claiming a problem with your account. Your access will be restricted unless you provide personal information to the caller or via a supplied internet link. The caller and link are con artists “phishing” for personal information.

## STRANDED MOTORIST

You go to the grocery store and park your car. Upon your return, your car will not start. A nice man offers assistance, and he just happens to be a mechanic. He looks under the hood and reports a computer chip has gone bad. He can replace the part, but warns it is expensive. You agree to pay just to have your car fixed and to save your groceries. Your car starts after he removes a hidden clamp from your fuel line.



## GRANDPARENT SCAM

You receive a telephone call— “This is your favorite grandchild. I am in Canada and I need some

money for an emergency.” Trying to identify the grandchild in distress, you call out a name and the caller says, “Yes, it’s me.” You are instructed to wire money.

## PIGEON DROP

This scam usually involves 2 to 3 suspects working together as “strangers” to con you into believing they have found abandoned or lost drug money, diamonds, gold bars, etc. They want to share it with you, but you must prove yourself trustworthy. You are convinced to withdraw “good faith” money from your bank account to put alongside the suspects’ “good faith” money

inside a bag or handkerchief, which is switched with an identical one. You are left with cut up newspaper or play money.



*For more information, please contact the Richardson Police Department Crime Prevention Unit at 972-744-4955.*

## PROTECT YOURSELF FROM COMMON SCAMS AND SCHEMES

1. NEVER give your personal information, checking account or credit card information over the phone unless you initiate the call.
2. ALWAYS verify anyone who calls or comes to your house uninvited to provide any service. Check the phone book or call information for the business numbers and call the company.
3. NEVER contract with or allow unsolicited door-to-door sales or repair people inside your home without independent verification of who they are and for whom they work. Get a written contract.
4. SHRED all personal and financial information before discarding, and mail this kind of correspondence in a postal drop box.
5. REMEMBER it is illegal for a legitimate sweepstakes to require any money up front before paying out winnings.
6. LOCK all doors and secure windows, even when you are at home or outside working in the yard.
7. REAL FRIENDS are not after your money or your credit.
8. TRUST YOUR INSTINCTS...take time to investigate and do not be pressured into a quick decision.
9. Get a copy of your own credit report every six months and check it to make sure there aren't any credit card or checking accounts you didn't open.
10. Read your monthly bank statements carefully and report any discrepancies immediately.
11. Guard the Personal Identification Number (PIN) you use on your various credit cards. Don't write them down in your personal planner or leave them on a slip of paper in your purse or wallet.



RICHLAND PARK/RICHLAND OAKS CURB PAINTING NOTICE

The Richland Homeowners Association has contracted to have all the address numbers of the homes in Richland Park/Richland Oaks painted on the curb. Standard curb painting will be a white background with black numbers.

- If the homeowner wants a particular school, flag, sports team, etc., the cost to the homeowner will be \$10, payable directly to the painter, Doug Vail at 972-217-2466 or [dougscurbmasters@gmail.com](mailto:dougscurbmasters@gmail.com).
- If at any time during the first year, the curb needs to be repainted due to damage by tires or weather, it will be redone at no charge to the homeowner.
- If there is any special curb painting at a particular house, the contractor will skip it, unless contractor is contacted to do a paint over. If you have an address painted that is special to only you (that would not be obvious to contractor) that you do not wanted to be painted over, please contact the contractor.
- If the curb is broken or cracked where the address should be, the contractor will move to the right or left about a foot to get a good area for painting the curb.
- We, as of now, are scheduling the painting to be done during the Week of October 16. This could change because of weather. It should take about a week to get the entire neighborhood completed. During this week, if at all possible, please park cars away from the curb where the number is located, so contractors has access to the area they will need to paint.
- If you have any questions, please contact D’Nelle Lyons, RHA president, at [dnelle.lyons@gmail.com](mailto:dnelle.lyons@gmail.com).

NEIGHBORHOOD GARDENERS, COME ONE, COME ALL!

We’re re-landscaping the Richland Park/Richland Oaks neighborhood entrances on Walnut and we need your help for the fun part!

First, landscape pros will dig up, amend and enrich the soil. Second (here’s where we get to come in), join us by installing new perennials and xeriscape plants!

The date isn’t set, but will be sometime in either October or November.

Let us know if you’re interested in joining us to make the neighborhood a more beautiful, inviting place to live!

Please call and talk to either:

- Millie Harrison 214-448-5942 or Val Standifer 214-977-0162



HAVE SOME NEWS TO SHARE?

Howdy Neighbors! Do you have some news to share? Do you know someone celebrating a 50th Anniversary, a special birthday, a new child, grandchild, or graduate, or maybe you’ve got a great story or article to share? Please send your news to your **RichlandNEWS** Newsletter at [news@richlandhoa.com](mailto:news@richlandhoa.com). We may be a big neighborhood, but we all care and like to know what’s going on around us. So share some news and let’s keep in touch!

Richland Homeowners Association  
2017 Membership Registration

(Please PRINT clearly or register online at [www.richlandhoa.com](http://www.richlandhoa.com))

1. Name and address (☐ Owner or ☐ Tenant):

First Name	Last Name	First Name	Last Name
House Number and Street Name			
Profession (not published)		Profession (not published)	

2. For publication in the RHA Directory to be used by neighbors to contact you (not available to the public).

Primary Phone	Primary Phone
---------------	---------------

3. For emergency use only by Crime Watch Patrol (garage or entry doors open, or fire).

Home Phone	Home Phone
Cell Phone	Cell Phone
Work Phone	Work Phone

4. For communicating meetings, planned events, and alerts (will not be included in the directory).

E-mail address	E-mail address
----------------	----------------

5. Volunteer interests (check each one that interests you!) and best time for contact:

<input type="checkbox"/> Crime Watch Patrol (min 2 hrs/month)	<input type="checkbox"/> 4 <sup>th</sup> of July Flags Distribution	<input type="checkbox"/> Membership Committee
<input type="checkbox"/> Spring Fling! Event Help	<input type="checkbox"/> DATABASE Support	<input type="checkbox"/> Seasonal Yard/Block Award Judging
<input type="checkbox"/> Movie Night in the Park Event Help	<input type="checkbox"/> Newsletter Contributor	<input type="checkbox"/> Advertising Marketer for Newsletter
<input type="checkbox"/> Block Captain	<input type="checkbox"/> Social Media – Photography/Posting Events	<input type="checkbox"/> Beautification Committee

Comments or Suggestions:

Enclose Check or use PayPal at [www.richlandhoa.com](http://www.richlandhoa.com)

Annual Dues	\$40.00
Additional Contribution (Tax Deductible)	
Total	\$

☐ Check enclosed   ☐ PayPal   ☐ Bank Payment Service

Payable to RHA and mail with completed form to:  
RHA, P.O.Box 852636, Richardson, TX 75085-2636



**RICHLANDNEWS Advertising Rates**

The **RICHLANDNEWS** newsletter is published quarterly and delivered to the Richland Park/Oaks neighborhoods.

Listed below are two options for placing an advertisement.

**Option 1:** Send payment and advertisement in by due date. If advertisement is on file we will use the current ad until a replacement is sent. You will receive a 10% discount if you are a Richland Homeowners Association (RHA) member.

**Option 2:** Pay for your advertisement for a full year and receive an additional 10% discount along with the 10% discount if you are a RHA member.

*The type, size and costs are listed below. Cost is per issue.*

Type	Size	Cost
Business Card	3 5/8" x 2 3/8"	\$25.00
1/4 Page (Vertical only)	3 5/8" x 4 7/8"	\$50.00
1/2 Page (Horizontal only)	7 1/2" x 4 3/4"	\$75.00
Full Page	7 1/2" x 9 7/8"	\$125.00
Back Page	7 1/2" x 9 7/8"	\$175.00

Advertisements must be a high resolution (300 dpi), camera-ready pdf or jpg and sent to: [news@richlandhoa.com](mailto:news@richlandhoa.com)



**PIANO FOR FOUR**

*Piano For Four* offers piano classes with no more than 4 students per class at a home studio in Richland Park. Pre-K and adult classes are currently being offered during regular school hours.

**Contact Cassie McCampbell at (214) 621-5586 or [c.mccampbell@att.net](mailto:c.mccampbell@att.net) for more information.**

Cassie McCampbell holds music degrees in Piano Pedagogy and Music Education from S.M.U. She has taught piano for 30+ years and teaches part-time in the music department at Richland College. Look for *Piano for Four* on Facebook and Nextdoor.

**TAX TIME! Get the expertise you need!**

**VALERIE STANDIFER, C.P.A.**  
*Richland Park resident since 1990*

Business-individuals-estates-trusts-non-profits  
9441 LBJ (at Abrams Road), Suite 508  
(972) 644-9614 ext.13

**Lifestyle Real Estate Specialist**  
*"Don't make a move without me!"*

While many real estate agents are qualified to help you buy or sell a home, most are not equipped to see the entire process through the eyes of someone 55 or older. The dreams you have, the challenges you face, the realities of it all – you need a specialist who has been trained to help any transitions you make be as smooth and positive as possible. I am that specialist!

Many people make the mistake of beginning to right-size without having first done their homework. A vital first step in the process of rightsizing, relocating, or making a move to a new location is meeting with a qualified professional to determine the most effective and efficient course of action. Making the mistake of skipping this step can cost you valuable dollars and cause you and your family undue stress.

Do your homework and talk to a professional Realtor who specializes in working with "senior adults on the move!" Get those questions answered.

Questions like:

What is my home worth?

What will it take to sell my home?

What do I do with all the 'stuff'?

Who can I trust to make repairs and move my things?

Can someone help me coordinate all these details? (Hint: Yes, me!)

As an agent specializing in seniors, I look forward to putting my years of experience and the professional training outlined above to work for you and your family. Insist on working with a **CSA (Certified Senior Advisor)** and a **CSHP (Certified Senior Housing Professional)** – work with a real estate agent who wants to work with you!



Contact me for a **free consultation\*** regarding the value of your home and your rightsizing needs, as well as a copy of *Downsizing Made Easy* or *Moving Mom and Dad!*

*\*Your consultation does not translate to a commitment, just an appointment!*

Proven excellence, with confidence and discretion:  
**AngelaMcCants.com**



469.567.0569  
[Angela@DavePerryMiller.com](mailto:Angela@DavePerryMiller.com)



A Division of Ebby Halliday Real Estate, Inc.

**Your Neighbor – Your Realtor®**

*Richland Park Resident Since 1977.*



  
**VIRGINIA COOK REALTORS**  
**Melinda Knecht**

GRI, TRLP, AHHS, Notary Public

Direct: 214-566-3550

[mknecht@virginiacook.com](mailto:mknecht@virginiacook.com)

[www.SoldOnMelinda.com](http://www.SoldOnMelinda.com)

GLOBAL Referral Network



*Recommendations & referrals are the core of my business and are always greatly appreciated. Around the corner or around the world, I'm here to help you quickly move your home from FOR SALE to SOLD!*







Call **ALL LEVEL** today to schedule **YOUR FREE ESTIMATE**

**214-244-3512**

- Sidewalks
- Driveways
- Pool Decks
- Patios
- Porches/Stoops
- Interior Floor Slabs

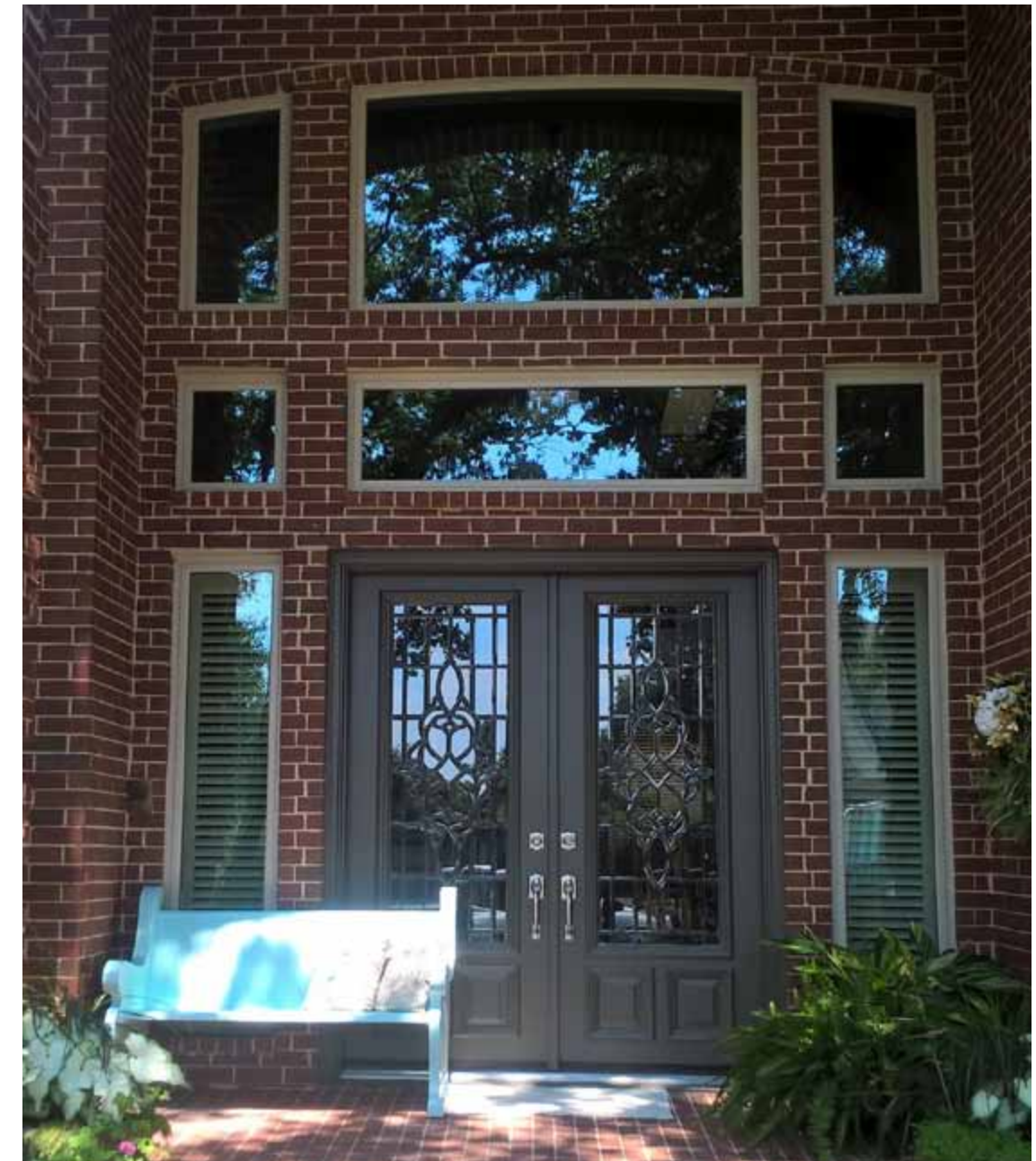
**ALL LEVEL** repairs your concrete at well under the half cost to replace and in a fraction of the time!

**ALL LEVEL** is insured and provides a warranty

Visit our web page [www.all-level.com](http://www.all-level.com) for more before and after pictures.



## Richland Park Neighborhood Window Company Acri.com



Charlie D.  
Neighborhood Window Specialist

**Millennium Windows**

**acri.com**

**Family Owned  
Trusted by Neighbors**

**214-771-5000**







**Interior Design  
Design-Build**  
Richardson's source for  
Turnkey Projects

Kitchens | Bathrooms  
Common Areas  
Media/AV Design  
Lighting Design  
Coffers/Cabinets

*Refresh...  
Renew...  
Revitalize*

**214 698 9936**

design@dorianbahr.com  
www.dorianbahr.com

Curtis Dorian, RID  
Michael Bahr  
Richardson Resident



#### Renovation | FLIP

Dorian Bahr/Dorian Development will design & GC your next project!

**Transformed Preston Hollow Residence:** traditional style to transitional-modern; created open floor plan for living-kitchen areas & media space, added galley-style kitchen w/dry-bar, added connecting structure w/deck for media/bonus room access, new finishes, lighting, tile, quartz counters, soft-close drawers, wood floors, appliances, nest, security, windows and sprinkler.



**Interior Design  
Design-Build**  
Richardson's source for



**Turnkey Projects**

Kitchens | Bathrooms  
Common Areas  
Media/AV Design  
Lighting Design  
Coffers/Cabinets

*Refresh...  
Renew...  
Revitalize*

**214 698 9936**

design@dorianbahr.com  
www.dorianbahr.com

Curtis Dorian, RID  
Michael Bahr  
Richardson Resident



#### Courtyard Renovation & Revitalization (Pergola's & Fences)

**Cantilevered Pergola:** custom side & pool courtyard. This design project present, suspended pergola w/copper/platinum ceiling fan, cladded-stained v-board siding, new cladded rock-tile over existing pebbled aggregate w/glass border inlay, new bar, furniture, decorative urns, umbrellas & wall art. New landscaping w/landscape lighting and new soaker system. Visit website to view entire project.



**LAVALLE CLARK, REALTOR®**

**214-616-5084**

lavalleclark@ebby.com



## UNSURPASSED SERVICE TO YOU!

Our Homes In Richland Park & Richland Oaks Are Our Greatest Investment

Property Values Are Soaring And Homes Are Selling Quickly

As Your Realtor And Neighbor,

I will Assist You In Getting The Most Equity Out Of Your Home

If You Are Ready To Sell, It Would Be My Pleasure To Assist You!



NMLS #327510



**Rick McCants**

Loan Officer

NMLS #327510

Broker NMLS #506460

I'm Ready to help with all your residential mortgage needs!

Services Provided Are. . .

Conventional & Government Loans  
Prime and non-prime loans  
Purchasing  
Refinance and equity cash-out



214-207-4219

214-276-1860

rickmccants@gmail.com


www.quickmoveloan.com

660 N. Central Expy,  
Ste 102  
Plano TX, 75074

You'll receive personal attention throughout the loan process. I look forward to working closely with you on your lending needs. Contact me for your tailored experience.



**thm**



**Traute H. Malhotra, CRS, GRI**

Associate Broker United Real Estate

Eco-Broker • e-PRO • GMA • HHS • SFR • TAHS • TRC • TRLP

**214.597.2962**

Traute@thmrealty.com  
www.thmrealty.com

**United Real Estate**

#realestate #richlandparkhomes #homesforsale #dreamscometrue

**TAYLOR COUNSELING GROUP**

PROFESSIONAL COUNSELING SERVICES

Professional care, affordable rates.

We believe that quality help shouldn't break the bank. Our counselors are well equipped to work with individuals, couples, families, and groups of all backgrounds and lifestyles.

Our specialties include, stress management, identity development, pre-marital therapy and marital enrichment, couples and relational counseling, family and group counseling, faith-based counseling, grief, addiction, obsessive-compulsive, spirituality, and sexuality struggles.

Ask about our sliding fee scale and reduced rates.  
Most major insurances are accepted.

11300 N. Central Expressway, Suite 610  
Dallas, Texas 75243  
(214) 530-0021  
www.taylorcounselinggroup.com  
info@taylorcounselinggroup.com



\*\*\*\*\*



**Doll Fashions By Kathy**

*For your American Girl Dolls*

*"Affordable doll outfits for every occasion."*

Kathy Thompson  
(972) 238-8636

\*\*\*\*\*



**David A. Shaw**  
Pet Sitting • Pet Taxi

**214-675-9481**  
david@iluvpawz.com

**Loving Pet Care**  
Fully Insured & Bonded

www.iluvpawz.com



**DORIANBAHR**  
Custom Homes & Design

www.dorianbahr.com | facebook.com/doriandevelopment  
**214.698.9936**

ARCHITECTURE PLANNING DESIGN



**Barb's sewing arts**

**214-577-9036**  
By appointment only

*Alterations, Dressmaking, Tailoring*



**Lawn & Landscape Maintenance**  
(Seasonal & Yearly Plans with Monthly Billing)

**General Pest & Mosquito Control**

**Fertilizing & Weed Control**

**Landscape Design & Installation**

**(972) 303-9352**  
londonlawn@aol.com

**WWW.LONDONLAWNS.COM**

Complete Lawn and Pest Management



EBBY HALLIDAY COMPANIES




**Your Richland Park & Richland Oaks**

**Resident & Neighbor**


**972-743-9232**

Email: pamcrum@ebby.com  
www.pamcrum.ebby.com  
3621 Shire Blvd. Ste 100  
Richardson, Texas 75082



**Pam Crum**

*Successfully Assisting with your Real Estate Needs since 1984*

 you'll find your home at **ebby.com**



Come and see the blessings of a St. Joseph education!



**ST. JOSEPH CATHOLIC SCHOOL**  
Worship. Study. Serve.

OPEN HOUSE



Tuesday, November 14<sup>th</sup> at 7:00pm

Tuesday, January 23<sup>rd</sup> at 9:00 am or 7:00 pm

February 13<sup>th</sup> at 9:00 am or 7:00 pm

*We look forward to meeting you!*

[www.stjosephccschool.net](http://www.stjosephccschool.net)

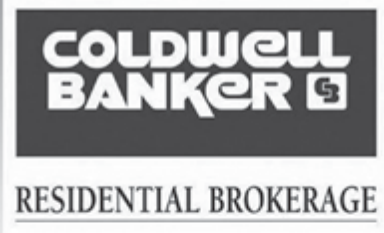
Serving Richland Park &  
Richland Oaks for 38 years



**Sue Ann Roush, GRI, CPRES**  
**214-532-9992**

[sueannroush@sbcglobal.net](mailto:sueannroush@sbcglobal.net)

<http://www.coldwellbankerhomes.com/sueannroush>



- Advanced historic home specialist
- Previews® luxury homes specialist
- Certified with worldwide Cartus® Referral Network
- Certified Probate Real Estate Specialist



*"I'm watching our neighborhood appraisals - they're mine too!" Allow me, an experienced neighborhood Realtor, to sell your home. As a buyer's agent, I will assist your move to your new destination, including builder's new developments.*



• Home Repairs • Carpentry • Painting

**The Home Connection**

HOME IMPROVEMENTS

Dennis Schmitt  
409 Country Side Ln.  
Richardson, TX 75081  
(972) 238-1660  
Cell (214) 334-7334  
E-Mail: [dennyjoe2@att.net](mailto:dennyjoe2@att.net)

Registered Insured

Environmental Friendly Dry Cleaning

**Comet**  
CLEANERS AND LAUNDRY  
(Next to Kroger)

PETER CHUN  
OWNER &  
OPERATOR

(972) 437-2700  
908 AUDELIA RD., STE. 700  
RICHARDSON, TX 75081

# John Jones & Associates

*Certified Public Accountant*

Business & Personal  
Tax Preparation – Bookkeeping

**Personalized Quality Service**

529 Birch Lane,  
Richardson, TX 75081-5625  
**972-231-5245 / 214-695-1190**

**Mark Solomon**

Assurnet  
Insurance  
Agency



**Home—Auto—Health—Business**

*If it has the word insurance...Call us first!*

Hablamos Español

833 E Arapaho Rd, Ste 107  
Richardson, TX 75081  
214-739-5610

[Marksr@assurnet.biz](mailto:Marksr@assurnet.biz)  
[www.assurnet.biz](http://www.assurnet.biz)



*Serving Richardson  
families since 1986*



Attorney  
Mediator



**George S. McKearin**

Divorce, Family Law, Wills, Probate

**1901 N. Central Expressway**

**Suite 200, Richardson, TX 75080**  
**Fax: 972-889-3827 Phone: 972-889-3825**

**GSMMED1@AIRMAIL.NET**

**WWW. Lawyers.com/McKearinlaw**

Richland Park resident for more than 35 years.



# Kids in class? Who says you can't go, too?



- Business Management and Entrepreneurship
- Career Pathways · Community and Emeritus Programs
- English as a Second Language · Health Professions · Information Technology

Equal Opportunity Educational Institution



**Richland College**

DALLAS COUNTY COMMUNITY COLLEGE DISTRICT

[richlandcollege.edu/ce](http://richlandcollege.edu/ce)

Higher Education That  
***Actually*** Gets You Hired